

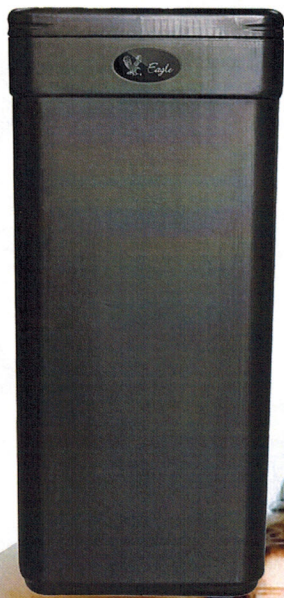
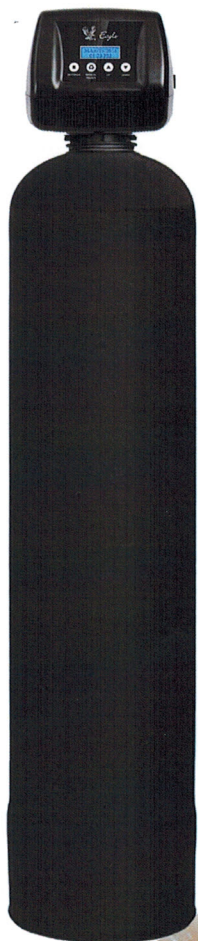
# Soft, Clean Truly Refined Water.



# Eagle

You can immediately see and feel the difference a water conditioner makes to the quality of your water and the quality of your life.

The **Eagle Platinum Twin Tank Water Conditioner** delivers High-Efficiency Performance for the Lowest Salt & Water Usage Ever!

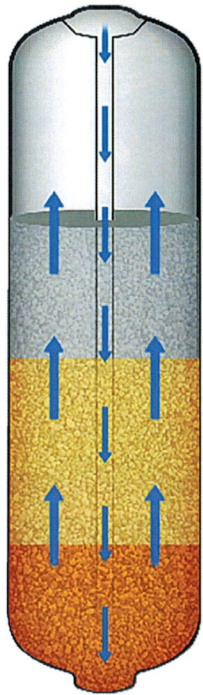


## Features:

- ▶ WQA Tested & Certified to NSF/ANSI 44 for effective reduction of hardness as verified and substantiated by test data
- ▶ NSF/ANSI 44 Certified Control Valve & Pressure Tank
- ▶ Extremely High Capacity Ion Exchange Resin
- ▶ User-friendly backlit LCD display with "No Touch" information display provides key info like date of last regeneration and volume of conditioned water remaining
- ▶ Heavy duty brine tank made from NSF Certified high density polyethylene. Includes brine safety valve for added assurance.
- ▶ Includes Bypass valve



# High Efficiency Features:



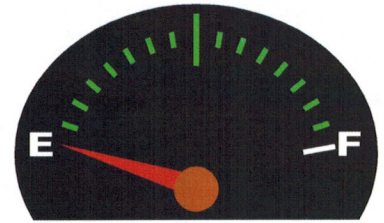
## Reverse Flow Regeneration with Precision Brining

Traditional 'downflow' softeners deplete the unused portion of the resin bed with every regeneration. It is like draining the gas tank in your car every time before filling it up!

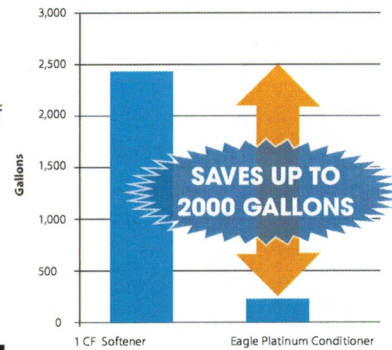
'Reverse Flow Regen' - drives the hardness minerals up through the already depleted resin and out to drain - saving both salt and the unused portion of the resin for future use.

**Precision Brining** - saves additional salt by pre-making only 70% of the brine. Just before regeneration, the computer calculates the precise amount of brine top-up needed to regenerate only the depleted resin saving up to 30% more salt!

- **Municipal Backwash Cycle Preset** reduces back wash frequency for clean water supplies
- **Sanitary System Flush** flushes stagnant water after 7 days of non-use preventing bacteria growth
- **Soft Water Quick Charge Mode** ensures soft water during unusually heavy water usage
- **Soft Water Brine Tank Refill** keeps tank & injectors clean



## Estimated Annual Back Wash Water Usage



Specifications	Eagle Platinum 24T	Eagle Platinum 32T	Eagle Platinum 48T	Eagle Platinum 64T
Item #	8902	8903	8904	8905
<b>Optional Settings - High Efficiency</b>				
Salt Used - Per Regeneration	2.3 lbs	3.0 lbs	4.5 lbs	6.0 lbs
Water Used - Regeneration	22.6 gal	31.6 gal	47.4 gal	60.9 gal
Hardness Removal - Grains	12,000	16,000	25,000	33,000
<b>Factory Settings - Standard Capacity</b>				
Salt Used - Per Regeneration	4.5 lbs	6.0 lbs	9 lbs	12.0 lbs
Water Used - Regeneration	34.0 gal	43.4 gal	65.6 gal	87.1 gal
Hardness Removal - Grains	18,750	25,000	32,000	50,000
<b>Optional - High Capacity</b>				
Salt Used - Per Regeneration	7.5 lbs	10.0 lbs	15 lbs	20.0 lbs
Water Used - Regeneration	49.6 gal	64.3 gal	96.4 gal	124.6 gal
Hardness Removal - Grains	24,000	32,000	48,000	64,000
Resin Quantity - Cubic Feet	0.75 ft	1.0 ft	1.5 ft	2.0 ft
Tank Size	8x44	9x48	10x54	12x52
Tank Jacket	Yes	Yes	Yes	Yes
Media Loaded	Yes	Yes	Yes	No
Brine Tank / Cabinet Size (Inches)	14" X 14" X 30"	14" X 14" X 30"	14" X 14" X 30"	20" X 20" X 37"
Salt Storage Capacity (lbs)	175	175	175	175
Flow Rate @ 15 psi Pressure Drop	10.4 gpm	11.0 gpm	12 gpm	12.2 gpm
Flow Rate @ 25 psi Pressure Drop	14.3 gpm	15.0 gpm	15.5 gpm	16.2 gpm
Back Wash Flow Rate	1.5 gpm	2.4 gpm	2.4 gpm	3.5 gpm
Shipping Weight	105 lbs	122 lbs	154 lbs	172 lbs
Regeneration Type	Counter Current / Up Flow			
Maximum Efficiency	5,060 grains /lb salt			
Plumbing Connections	Includes 3/4" 90° Elbows & 3/4" Straight NPT			
Resin Type	Extremely High Capacity Ion Exchange Resin - Exclusive			
Electrical Requirements	Input 120V 60 Hz - Output 12V 650mA			
Water Temperature	Min 39 - Max. 100 degrees Fahrenheit			
Water Pressure	Min. 20 - Max. 125 psi			



WQA Tested & Certified to NSF/ANSI 44 for effective reduction of hardness as verified and substantiated by test data.



*Eagle*

Water Treatment Systems  
 501 Rivière Sud  
 St-Eustache, Québec J7R 0E1  
 Tel.: 450-491-0882 or 1-800-363-6365  
 Fax: 450-491-2098  
 Email: info@eaglewater.ca  
 www.eaglewatertreatmentssystem.com