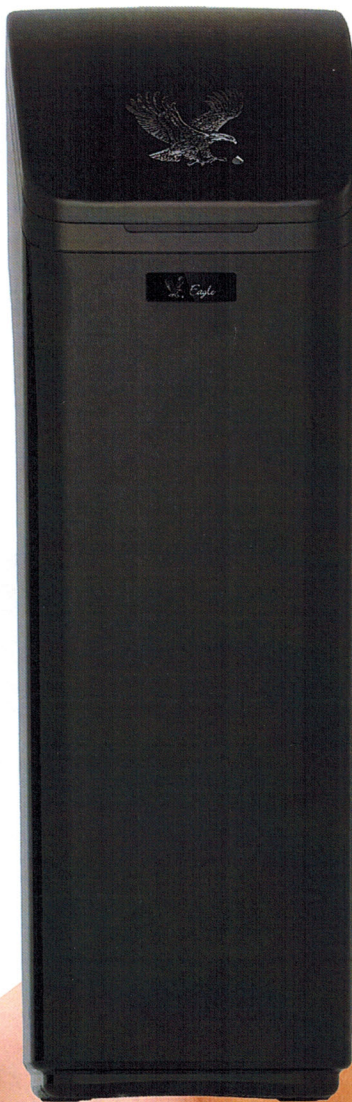


Soft, Clean Truly Refined Water.



Eagle

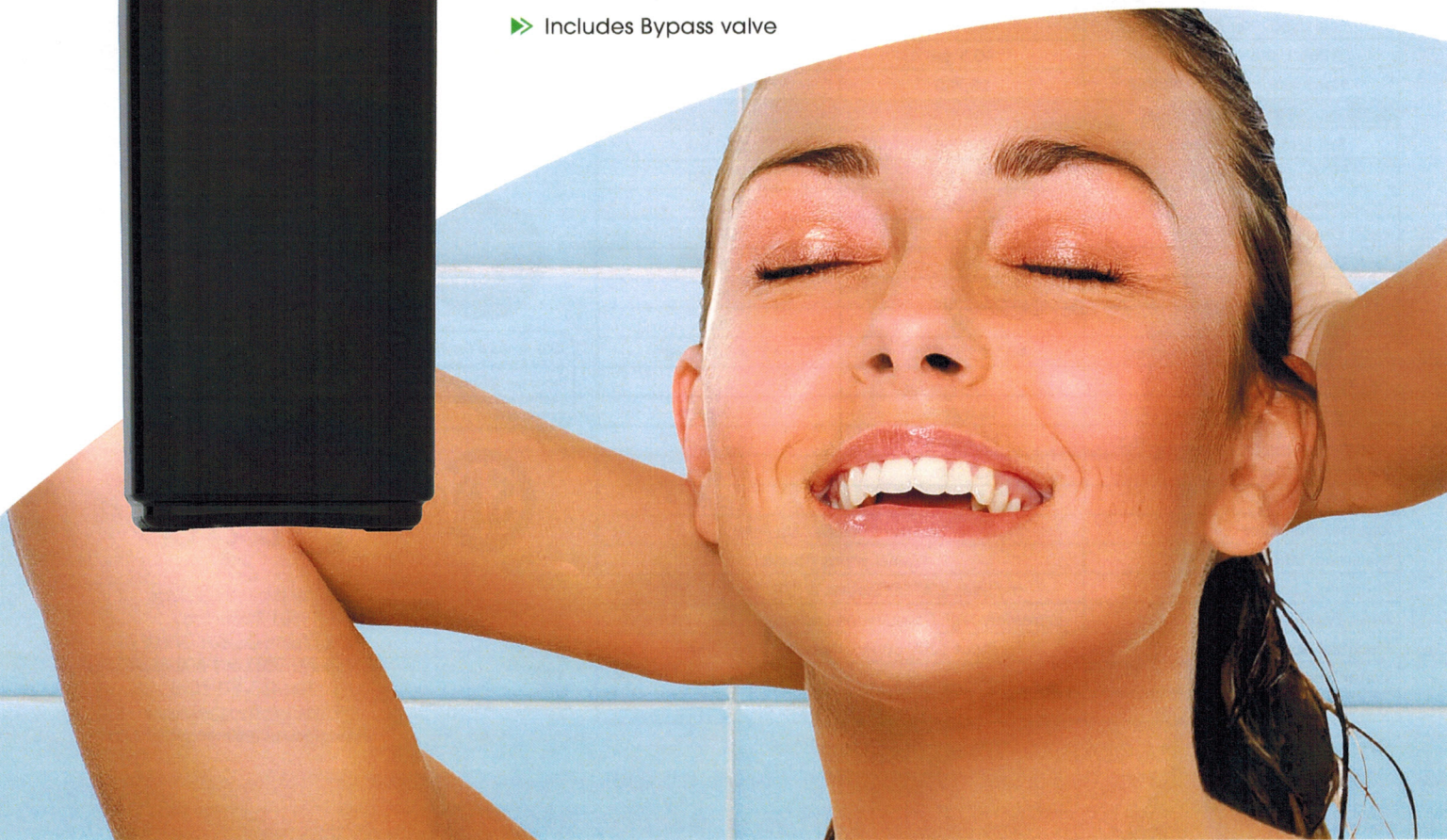
You can immediately see and feel the difference a water conditioner makes to the quality of your water and the quality of your life.



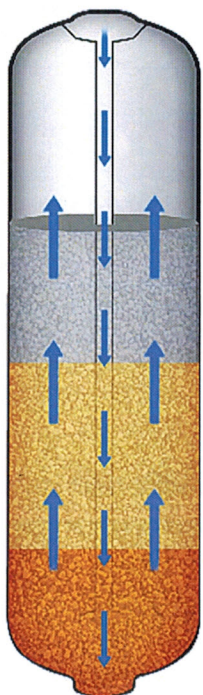
*The **Eagle Platinum Cabinet Style Water Conditioner** offers the most advanced high-efficiency performance in a compact, modern space-saving design. Unique features provide unmatched salt and water savings.*

Features:

- WQA Tested & Certified to NSF/ANSI 44 for effective reduction of hardness as verified and substantiated by test data
- NSF/ANSI 44 Certified Control Valve & Pressure Tank
- Extremely High Capacity Ion Exchange Resin
- User-friendly backlit LCD display with "No Touch" information display provides key info like date of last regeneration and volume of conditioned water remaining
- Heavy duty cabinet made from NSF Certified high density polyethylene. Includes brine safety valve for added assurance.
- Includes Bypass valve

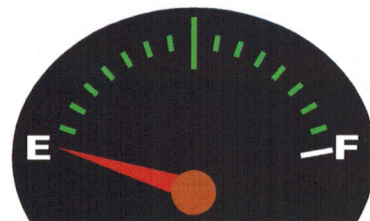


High Efficiency Features:



Reverse Flow Regeneration with Precision Brining

Traditional 'downflow' softeners deplete the unused portion of the resin bed with every regeneration. It is like draining the gas tank in your car every time before filling it up!

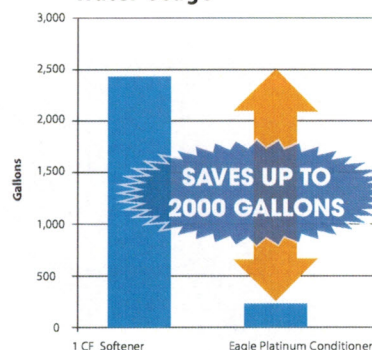


'Reverse Flow Regen' - drives the hardness minerals up through the already depleted resin and out to drain - saving both salt and the unused portion of the resin for future use.

Precision Brining - saves additional salt by pre-making only 70% of the brine. Just before regeneration, the computer calculates the precise amount of brine top-up needed to regenerate only the depleted resin saving up to 30% more salt!

- **Municipal Backwash Cycle Preset** reduces back wash frequency for clean water supplies
- **Sanitary System Flush** flushes stagnant water after 7 days of non-use preventing bacteria growth
- **Soft Water Quick Charge Mode** ensures conditioned water during unusually heavy water usage
- **Soft Water Brine Tank Refill** keeps tank & injectors clean

Estimated Annual Back Wash Water Usage



Specifications	Eagle Platinum -24C	Eagle Platinum-32C
Item #	8900	8901
Optional Settings - High Efficiency		
Salt Used - Per Regeneration	2.3 lbs	3.0 lbs
Water Used - Regeneration	22.7 gal	28.3 gal
Hardness Removal - Grains	12,000	16,000
Factory Settings - Standard Capacity		
Salt Used - Per Regeneration	4.5 lbs	6.0 lbs
Water Used - Regeneration	40.5 gal	48.6 gal
Hardness Removal - Grains	18,750	25,000
Optional - High Capacity		
Salt Used - Per Regeneration	7.5 lbs	10.0 lbs
Water Used - Regeneration	56.1 gal	69.5 gal
Hardness Removal - Grains	24,000	32,000
Resin Quantity - Cubic Feet	0.75 ft	1.0 ft
Tank Size	9x35	10x35
Tank Jacket	No	No
Media Loaded	Yes	Yes
Brine Tank / Cabinet Size (Inches)	43" X 20" X 20"	43" X 20" X 20"
Salt Storage Capacity (lbs)	175	175
Flow Rate @ 15 psi Pressure Drop	11.6 gpm	12.0 gpm
Flow Rate @ 25 psi Pressure Drop	15.6 gpm	16.0 gpm
Back Wash Flow Rate	2.0 gpm	2.4 gpm
Shipping Weight	93 lbs	110 lbs
Regeneration Type	Counter Current / Up Flow	
Maximum Efficiency	5,060 grains /lb salt	
Plumbing Connections	Includes 3/4" 90° Elbows & 3/4" Straight NPT	
Resin Type	Extremely High Capacity Ion Exchange Resin - Exclusive	
Electrical Requirements	Input 120V 60 Hz - Output 12V 650mA	
Water Temperature	Min 39 - Max. 100 degrees Fahrenheit	
Water Pressure	Min. 20 - Max. 125 psi	



WQA Tested & Certified to NSF/ANSI 44 for effective reduction of hardness as verified and substantiated by test data.



Eagle

Water Treatment Systems
501 Rivière Sud
St-Eustache, Québec J7R 0E1
Tel.: 450-491-0882 or 1-800-363-6365
Fax: 450-491-2098
Email: info@eaglewater.ca
www.eaglewatertreatmentsystems.com